



Part No.	Description
SB 2P	Small 2-pole High aluminium ceramic (extra white colour)
SB 3P	Small 3-pole High aluminium ceramic (extra white colour)
LB 2P	Large 2-pole High aluminium ceramic (extra white colour)
LB 3P	Large 3-pole High aluminium ceramic (extra white colour)
LB 4P	Large 4-pole High aluminium ceramic (extra white colour)
LB 6P	Large 6-pole High aluminium ceramic (extra white colour)

Compression Fittings



Part No.	Material	Tube Size	Process Connection
CFB 30 B 125	Brass	3mm (1/8")	1/8" BSP
CFB 30 B 250	Brass	3mm (1/8")	1/4" BSP
CFB 45 B 125	Brass	4.5mm (3/16")	1/8" BSP
CFB 45 B 250	Brass	4.5mm (3/16")	1/4" BSP
CFB 60 B 125	Brass	6mm (1/4")	1/8" BSP
CFB 60 B 250	Brass	6mm (1/4")	1/4" BSP
CFB 60 B 375	Brass	6mm (1/4")	3/8" BSP
CFB 60 B 500	Brass	6mm (1/4")	1/2" BSP
CFB 95 B 500	Brass	9.5mm (3/8")	1/2" BSP
CFB 30 B 250	S/S 316	3mm (1/8")	1/4" BSP
CFB 45 B 250	S/S 316	4.5mm (3/16")	1/4" BSP
CFB 60 B 250	S/S 316	6mm (1/4")	1/4" BSP
CFB 60 B 375	S/S 316	6mm (1/4")	3/8" BSP
CFB 60 B 500	S/S 316	6mm (1/4")	1/2" BSP



Small Aluminium



Big Aluminium



Din Head



Big Stainless Steel

Part No.	Size	Material	Sensor Connection	Cable Entry
KSC 500	Small	Aluminium	1/2" BSP	M16 x 1.5
KNC 500	Big	Aluminium	1/2" BSP	M20 x 1.5
KNC 750	Big	Aluminium	3/4" BSP	M20 x 1.5
KB 250	Small	Bakelite	1/4" BSP	M16 x 1.5
KB 500	Small	Bakelite	1/2" BSP	M16 x 1.5
KD 500	Big	Din Aluminium	1/2" BSP	M20 x 1.5
LS 500	Big	S/S 316	1/2" BSP	M20 x 1.5

EEx d (flameproof) Connection Head

Type XD-AD

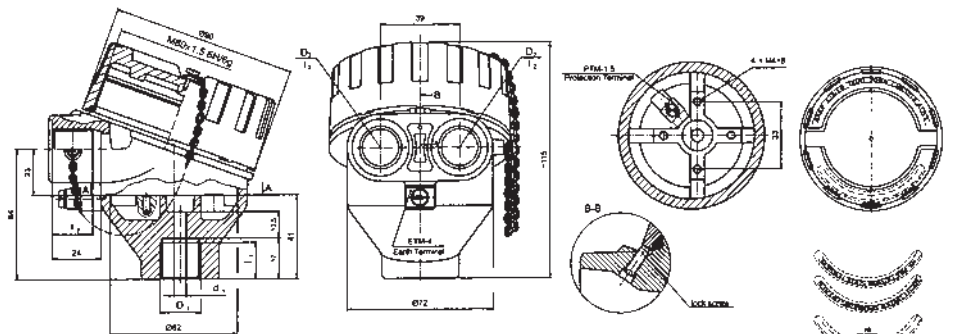


Material of body and cover : aluminium pressure die-casting, max.0.5% Mg

Ambient temperature: $T_{amb} = -40$ to $100^{\circ}C$ - silicone rubber

Coating: yellow chromating and chemically resistant paint (outside only)

Maximum space for transmitter: $\varnothing 52 \times 30$

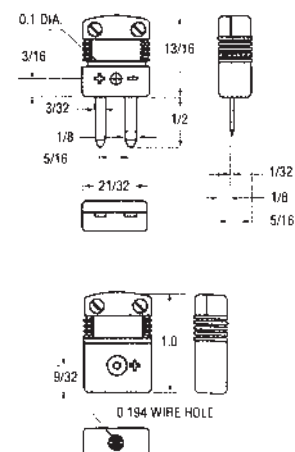


** Body and cover
* sign "mod" means modified thread ac.to OIT-17/03

Miniature Connectors

To Order (Specify Model Number)

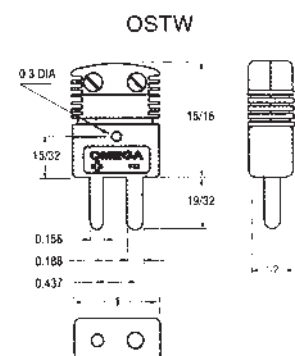
Alloy ¹ Code	Compensating Alloy Used in Connector		Shell Color	Glass-Filled Nylon Model Number	
	+	-		w/ Window	w/o Window
K	CHROME [®]	ALOMEGA [®]	Yellow	SMPW-K-(*)	SMPW-K-(*)
T	Copper	Constantan	Blue	SMPW-T-(*)	SMPW-T-(*)
J	Iron	Constantan	Black	SMPW-J-(*)	SMPW-J-(*)
E	CHROME [®]	Alloy #11	Purple	SMPW-E-(*)	SMPW-E-(*)
R	Copper	Alloy #11	Green	SMPW-R-(*)	SMPW-R-(*)
S	Copper	Alloy #226	Green	SMPW-S-(*)	SMPW-S-(*)
G	Alloy #200	Alloy#426	Red/Green	SMPW-G-(*)	SMPW-G-(*)
C	Alloy #405	Alloy#225	Red	SMPW-C-(*)	SMPW-C-(*)
D	Alloy #203	Alloy#203	Red/White	SMPW-D-(*)	SMPW-D-(*)
U	Copper	Copper	White	SMPW-U-(*)	SMPW-U-(*)
N	OMEGA-P [®]	OMEGA-N [®]	Orange	SMPW N (*)	SMPW N (*)



Standard Connectors

To Order (Specify Model Number)

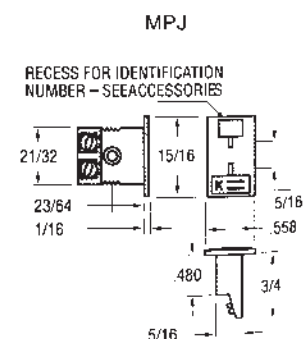
Alloy ¹ Code	Compensating Alloy Used in Connector		Shell Color	Glass-Filled Nylon Model Number	
	+	-		w/ Window	w/o Window
K	CHROME [®]	ALOMEGA [®]	Yellow	OSTW-K-(*)	OSTW-K-(*)
T	Copper	Constantan	Blue	OSTW-T-(*)	OSTW-T-(*)
J	Iron	Constantan	Black	OSTW-J-(*)	OSTW-J-(*)
E	CHROME [®]	Constantan	Purple	OSTW-E-(*)	OSTW-E-(*)
R/S	Copper	Alloy #11	Green	OSTW-R/S-(*)	OSTW-R/S-(*)
U	Copper	Copper	White	OSTW-U-(*)	OSTW-U-(*)
N	OMEGA-P [®]	OMEGA-N [®]	Orange	OSTW-N-(*)	OSTW-N-(*)



Miniature Panel Jacks

To Order (Specify Model Number)

Alloy ¹ Code	Type of Thermocouple Used with Connector	Compensating Alloy Used in Connector		Shell Color	Model Number (Female)
		+	-		
K	CHROME [®] -ALOMEGA [®]	CHROME [®]	ALOMEGA [®]	Yellow	MPJ-K-F
T	Copper-Constantan	Copper	Constantan	Blue	MPJ-T-F
J	Iron-Constantan	Iron	Constantan	Black	MPJ-J-F
E	CHROME [®] -Constantan	CHROME [®]	Constantan	Purple	MPJ-E-F
R/S	Pt-Pt/13%Rh	Copper	Alloy #11	Green	MPJ-R/S-F
G	W-W/26%Re	Alloy #200	Alloy #226	Red	MPJ-G-F
C	W/5%Re-W/26%Re	Alloy #405	Alloy#426	Red	MPJ-C-F
D	W/3%Re-W/25%Re	Alloy #203	Alloy#225	Red	MPJ-D-F
U	Uncompensated	Copper	Copper	White	MPJ-U-F
N	OMEGALLOY [®]	OMEGA-P [®]	OMEGA-N [®]	Orange	MPJ-N-F



Porous materials

Sillimantín 60 NG-Tubes medium fine structure Al ₂ O ₃ content approx. 73-75%	Sillimantín 65-Rollers fine structure Al ₂ O ₃ content 78-80% Especially for roller hearth kilns.	Sillimantín 60-Tubes Type 530 (DIN VDE 0335) medium fine structure Al ₂ O ₃ content approx. 73-75%	Sillimantín KS-Tubes medium fine structure Al ₂ O ₃ content approx. 70%	Silicon Carbide-Tubes fine and coarse structure SiC content 75%-90% claybonded	Halsic-R-Tubes recrystallized SiC SiC content 99%
Outer/inner ø mm	Outer/inner ø mm	Outer/inner ø mm	Outer/inner ø mm	Outer/inner ø mm	Outer/inner ø mm
20 × 15	25.0 × 15.0	20 × 15	15 × 7	17 × 12	20 × 10
22 × 17	26.9 × 17.0	22 × 17	20 × 12	20 × 15	22 × 12
24 × 19	27.0 × 17.0	24 × 19	20 × 15	22 × 17	25 × 15
26 × 18	27.7 × 17.0	26 × 18	25 × 15	24 × 19	30 × 20
28 × 22	30.0 × 20.0	28 × 22	25 × 18	26 × 18	32 × 22
30 × 23	31.0 × 21.0	30 × 23	30 × 20	26 × 20	34 × 24
35 × 27	33.0 × 23.0	35 × 27	35 × 25	28 × 22	35 × 25
40 × 32	33.7 × 23.0	40 × 32	40 × 30	30 × 23	40 × 30
50 × 40	33.7 × 23.7	50 × 40	45 × 35	31 × 25	45 × 35
60 × 50	34.0 × 22.5	60 × 50	50 × 40	33 × 28	50 × 38
70 × 60	35.0 × 28.0	70 × 60	55 × 45	35 × 27	
80 × 70	36.0 × 24.0	80 × 70	60 × 48	40 × 32	
90 × 75	36.0 × 25.0	90 × 75		45 × 35	
100 × 85	40.0 × 30.0	100 × 85		50 × 40	
110 × 95	42.0 × 32.0	110 × 95		55 × 45	
120 × 100	42.4 × 32.4	120 × 100		60 × 50	
130 × 110	55.0 × 45.0	130 × 110		65 × 55	
140 × 120		140 × 120		70 × 60	
160 × 140		160 × 140		75 × 65	
200 × 175		200 × 175		80 × 70	
250 × 230		250 × 230		85 × 75	
330 × 310		330 × 310		90 × 75	
max. length 3200 mm depending on diameter	max. length 3400 mm depending on diameter	max. length 3500 mm depending on diameter	max. length 2000 mm depending on diameter	max. length 2000 mm depending on diameter	max. length 3000 mm depending on diameter

Insulators and short insulating tubes for thermocouple elements are made in our materials ALSINT 99,7 TYPE 799 and PYTHAGORAS TYPE 610.

The tolerances adhered to are according to DIN 40 680. Closer tolerances on enquiry.



Impervious materials

Alsint 99,7-Tubes Type 799 (DIN VDE 0335) Al ₂ O ₃ content 99.7%			Pythagoras-Tubes Type 610 (DIN VDE 0335) Al ₂ O ₃ content approx. 60% Alkali content 3%			Pythagoras 1800 Z-Tubes Al ₂ O ₃ content approx. 76% Alkali content 0.3%			Halsic-I-Tubes reaction bonded Si-infiltrated SiC SiC content approx. 90% free Si approx. 10%		
mm	Outer/inner Ø mm	mm	mm	Outer/inner Ø mm	mm	mm	Outer/inner Ø mm	mm	Outer/inner Ø mm	mm	
0.8 × 0.3	26 × 20	120 × 100	0.8 × 0.3	20 × 15	80 × 70	48 × 40	20 × 13				
1.3 × 0.7	28 × 22	120 × 105	1.3 × 0.7	22 × 17	85 × 75	53 × 43	22 × 15				
1.6 × 1.0	30 × 23	130 × 110	1.6 × 1.0	24 × 18	90 × 75	60 × 52	25 × 18				
1.8 × 1.2	35 × 27	140 × 120	1.8 × 1.2	24 × 19	90 × 80	63 × 53	27 × 20				
2.0 × 1.0	38 × 30	140 × 125	2.0 × 1.0	26 × 18	95 × 85	70 × 60	30 × 20				
2.7 × 1.7	42 × 34	150 × 130	2.7 × 1.7	26 × 20	100 × 85	73 × 63	40 × 30				
3.0 × 2.0	46 × 38	155 × 135	3.0 × 2.0	28 × 22	105 × 90	75 × 65	42 × 32				
4.0 × 2.0	50 × 40	160 × 140	4.0 × 2.0	30 × 23	110 × 95	80 × 70	45 × 35				
5.0 × 3.0	55 × 45	170 × 150	5.0 × 3.0	31 × 25	115 × 100	82 × 72					
6.0 × 4.0	60 × 50	175 × 155	6.0 × 4.0	35 × 27	120 × 100	85 × 74					
8.0 × 5.0	65 × 56	180 × 160	8.0 × 5.0	38 × 30	125 × 105	86 × 76					
9.0 × 6.0	70 × 60	185 × 165	9.0 × 6.0	40 × 32	130 × 110	87 × 77					
9.6 × 6.4	72 × 62	190 × 170	9.6 × 6.4	45 × 38	140 × 120	88 × 78					
10.0 × 6.0	75 × 65	200 × 175	10.0 × 6.0	48 × 40	140 × 125	93 × 83					
12.0 × 8.0	80 × 70	220 × 200	12.0 × 8.0	50 × 40	150 × 130	95 × 85					
12.7 × 8.9	85 × 75	240 × 220	12.7 × 8.9	52 × 42	160 × 140	100 × 90					
14.0 × 10.0	90 × 80	260 × 240	14.0 × 10.0	55 × 46	170 × 150	105 × 90					
15.0 × 10.0	95 × 85	270 × 250	15.0 × 10.0	58 × 50	180 × 160	115 × 105					
17.0 × 12.0	100 × 85	300 × 280	15.0 × 11.0	60 × 50	190 × 170	120 × 110					
17.5 × 11.1	105 × 90	320 × 300	17.0 × 12.0	65 × 55	200 × 180						
20.0 × 15.0	110 × 95	420 × 380	17.0 × 13.0	70 × 60	240 × 220						
24.0 × 18.0	115 × 100	450 × 430	17.5 × 11.1	75 × 65	300 × 280						

max. length 3500 mm depending on diameter	max. length 3500 mm depending on diameter	max. length 2000 mm depending on diameter	max. length 3000 mm depending on diameter
--	--	--	--

Dimensions not shown above can be made to order. The dimensions shown are a selection from our range. The maximum outer diameter which can be manufactured is 450 mm.

We supply the following types of tubes:
 open both ends
 closed one end
 open both ends with flange
 closed one end with flange

