

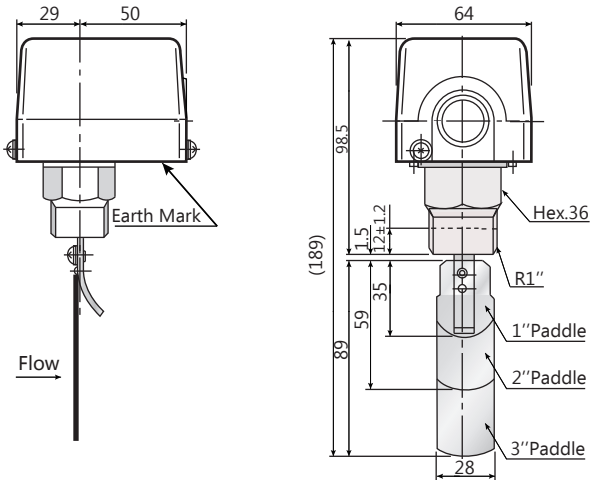
ecoSTAR Liquid Flow Switch ecoFS-50P

Description

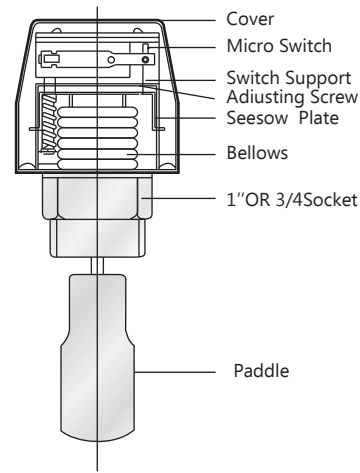


- L series liquid flow switch is used to monitor the flow change
- Renovated SPDT micro-switch ensure the reliable switch function
- Max temperature of medium 120 C
- Liquid pressure up to 1Mpa
- 3 stainless steel blades for diameter of 25-75mm pipeline
- 6 additional blades for 100-150mm pipe
- Protection type IP54
- Various connections are available on request
- Max working pressure 13.5Bar
- Electrical loading AC250V 10A
- CE approval.

Dimensions (mm)



Structure



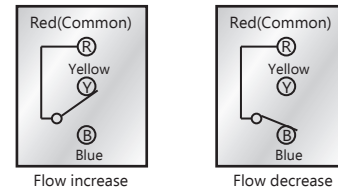
Liquid Flow Rate Table

Line pipe size(in.)		1	1-1/4	1-1/2	2	2-1/2	3	4	5	6	8
Min. flow	Flow increase R to Y	1.0	1.3	1.7	3.1	4.1	6.2	8.4	12.9	16.8	46.6
	Flow decrease R to B closes	0.6	0.1	1.1	2.2	2.8	4.3	6.1	9.3	12.3	38.6
Max. flow	Flow increase R to Y closes	2.0	3.0	4.4	6.6	7.8	12.0	18.4	26.8	32.7	94.2
	Flow decrease R to B closes	1.9	2.8	4.1	6.1	7.3	11.4	17.3	25.2	30.7	90.8

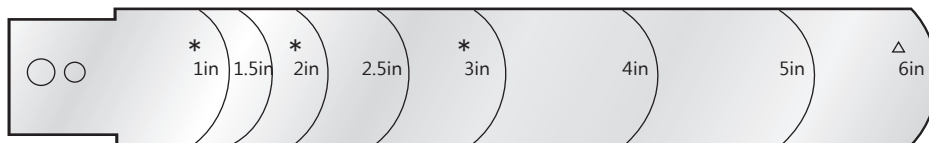
Installation

- Direction of the arrow on the cylinder should be in line with the pipe flow;
- Water flow switch should be installed in a horizontal pipeline, it must be installed in a vertical direction;
- Flow switch in use is absolutely not permit to flow back to avoid the blade back into the fracture.

Contact Function



Trimming of the Paddle



Notice:

With (*) leaves for the factory is installed;
 With (Δ) for additional blades (not installed);
 After the leaves trimmed to install, its top of the wall shall not have any friction with the wall and the bottom 5-10 mm gap.



dpstar Thermo Control Electric Sdn Bhd (Co.No.:387517-A)

No.35, Jalan OP 1/2, Pusat Perdagangan One Puchong,
 Off Jalan Puchong, 47160 Puchong, Selangor Darul Ehsan, Malaysia.

Tel: +603-8071 6322 | Fax: +603-8071 6822 | E-mail: info@dpstar.com.my | Website: www.dpstar.com.my